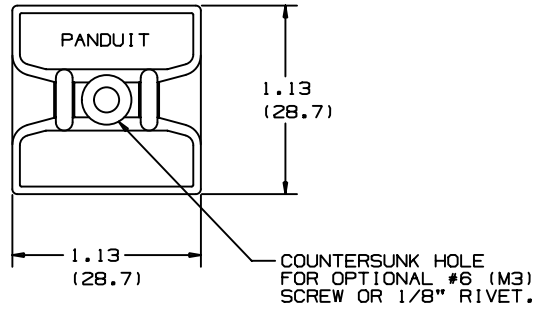


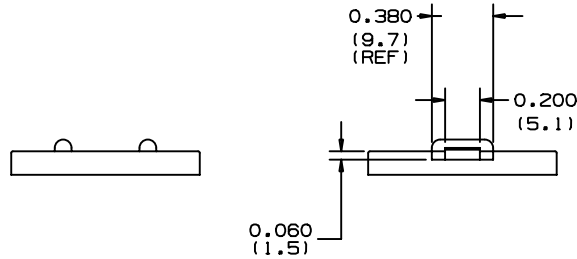
THIS COPY IS PROVIDED ON A RESTRICTED BASIS AND IS NOT TO BE USED IN ANY WAY DETRIMENTAL TO THE INTERESTS OF PANDUIT CORP.



PANDUIT PART NO. *	WEIGHT (g) lbs/100 pcs (g)/100 pcs	USE WITH THESE CABLE TIE CROSS-SECTIONS
ABMS-S6	0.42 (189)	M, I, S

NOTES:

\*1) SEE CURRENT PRICE SHEET FOR PART NUMBER SUFFIX DESIGNATIONS FOR PACKAGE SIZE.



DIMENSIONS IN BRACKETS ARE METRIC [ mm ]

CAD FILENAME/LAYERS

G00239GF\_DC\_01

**PANDUIT**

CORP. TINLEY PARK, ILLINOIS

ABMS-S6  
ABMS MOUNT

UNLESS OTHERWISE SPECIFIED,  
DIMENSIONAL TOLERANCES ARE:  
(.X) ±0.05 (1.3) (.XXX) ±0.010 (0.25)  
(.XX) ±0.02 (0.5) ANGLES ± 5°

UNLESS OTHERWISE SPECIFIED,  
ALL DIMENSIONS ARE GIVEN  
IN INCHES, THIRD ANGLE PROJECTION.

REV	DATE	BY	CHK	DESCRIPTION	ECN	R	CUST	SUP
I	2-18-99	CGSM		CHANGED PART NO. TO ABMS-S6 ON CHART	GB0239GF	I		
R	2-11-99	CGSM		INITIAL RELEASE	GB0239GF	R		

DRAWN BY CGSM

MAT'L:

SCALE NONE

DATE

2-11-99

NYLON 6/6

DRAWING NO.

GB0239GF

DWG

A  
SIZE

# Mouser Electronics

Authorized Distributor

Click to View Pricing, Inventory, Delivery & Lifecycle Information:

[Panduit:](#)

[ABMS-S6-D](#)